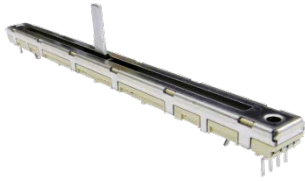


# SLIDE POTENTIOMETER

## Travel 100mm Super Type



### ◆ FEATURE

- Solder able with auto dipping.
- Snap-in type also available.

### ◆ APPLICATIONS

- Various control applications with general consumer electronics products, mixer, industrial machines, etc.

### ◆ COMMON SPECIFICATIONS

Characteristics	Specification
Operating temperature range	-10°C to +70°C
Operating force	10 ~ 80 gf
Total resistance	5KΩ、10KΩ、20 KΩ、50 KΩ、100 KΩ、250 KΩ、500KΩ
Total resistance tolerance	±20%
Resistance taper	A,B,C
Sliding service life	15,000 cycles

### ◆ DIMENSIONS

Unit: mm

Model	Dimensions
RFA0112H RFA0112L (Center detent)	
RFA0112P	

**Note:** The outline dimensions and shape of RFA011Y are the same as those of RFA0112.