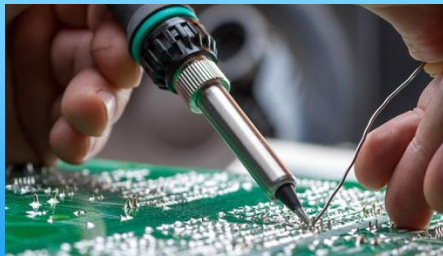


FORWARD

FORWARD ELECTRONICS



FORWARD Review 2025 Q3

Safe Harbor Statement

- This presentation contains forward-looking statements subject to significant risks and uncertainties. Actual results may differ significantly from those contained in the forward-looking statements. The forward-looking statements should not be interpreted as legally binding commitments, but rather as flexible information subject to change occasionally.

Outline

- Company Overview
- Financial Overview
 - Consolidated P/L for Q3 2024
 - Consolidated B/S for Q3 2024
- Main Products & Application
- SWOT Analysis
- Q&A

Company Overview

- Headquarter : No. 393, Section 1, Zhongzheng Road, Sanxia District, New Taipei City, Taiwan
- Founded : August 31, 1970
- OTC Listing (Code 8085) : March 1, 2004
- Paid-in Capital : NT\$ 1.399 billion
- Number of Employees : Approx. 302 employees

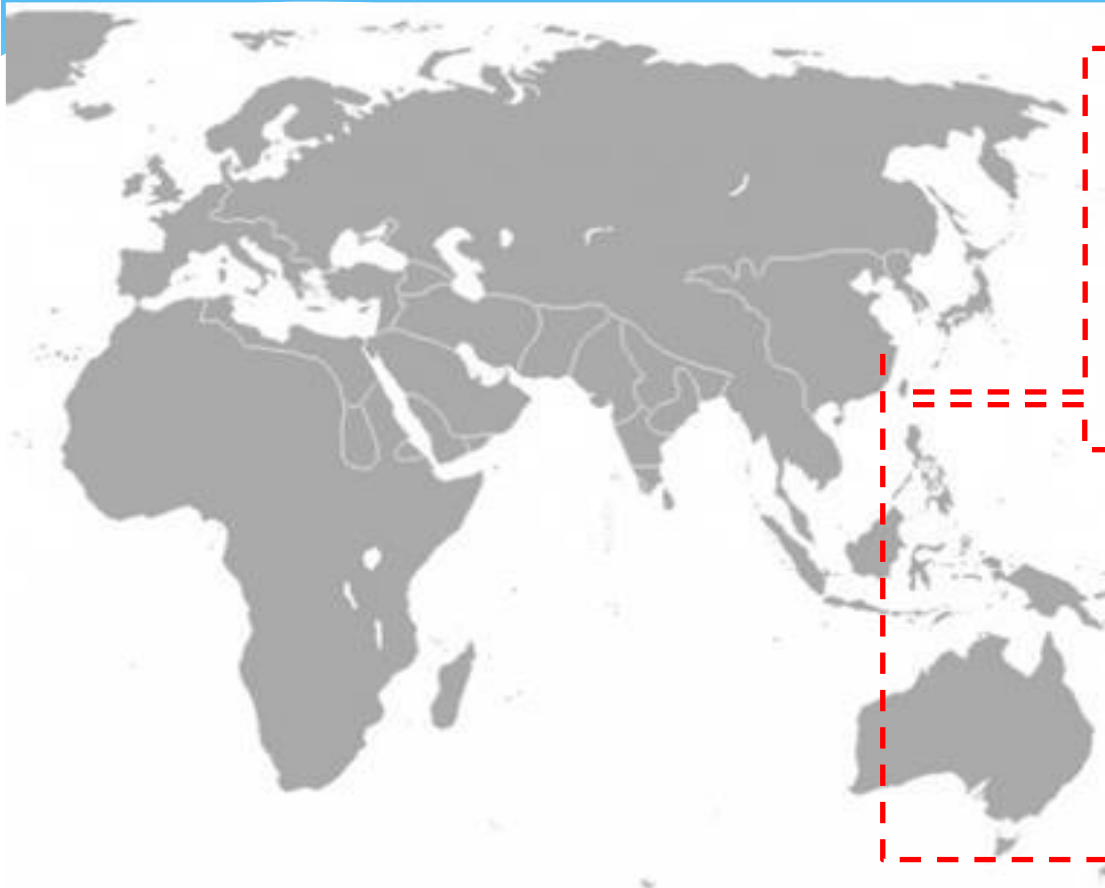
Company Overview

Forward Electronics was founded in 1970 and is headquartered in Taiwan. It is a company with integrated and professional R&D and manufacturing capabilities. From the company's inception period with TV tuners and precision electronic components as its main products, Forward has gradually developed into a company that provides diversified products and services.

Today, our products are mainly developed for the market of optoelectronics, information communication and automotive electronics industries, in order to comply with the market trend and expand the business territory. In addition, Forward 's quality management system has also been recognized internationally with the certification of ISO 9001, ISO 14001, ISO / TS 16949, ISO45001, and ISO27001.

Through the close cooperation of the Sanxia Plant in Taiwan, the Kaohsiung Plant and the Wujiang Plant in Mainland China, we can provide flexible production and capacity adjustment corresponding capabilities to meet the needs of different customers.

Global base



Sanxia Headquarter



Kaohsiung Plant



Suzhou Wujiang Plant



Consolidated income statement for Q3 2024

In thousand NT\$

單位：新台幣千元									
		Q3 25	Q2 25	Q3 24	QoQ	YoY	YTD25	YTD24	YoY
營業收入		161,872	164,748	170,063	-1.8%	-4.8%	484,282	449,986	7.6%
COGS		152,972	153,127	158,329	-0.1%	-3.4%	451,910	429,362	5.3%
營業毛利		8,900	11,621	11,734	-30.6%	-24.2%	32,372	20,624	57.0%
營業費用		36,670	28,033	65,778	23.6%	-44.3%	91,666	143,820	-36.3%
營業利益		(27,770)	(16,412)	(54,044)	40.9%	-48.6%	(59,294)	(123,196)	-51.9%
營業外收支		72,658	(43,951)	(5,189)	虧轉盈	虧轉盈	6,617	32,849	-79.9%
繼續營業部門稅前淨利		44,888	(60,363)	(59,233)	234.5%	虧轉盈	(52,677)	(90,347)	-41.7%
所得稅費用		665	1,085	281	-63.2%	136.7%	1,799	664	170.9%
稅後淨利		44,223	(61,448)	(59,514)	239.0%	虧轉盈	(54,476)	(91,011)	-40.1%
每股盈餘(新台幣元)		0.32	(0.44)	(0.43)			(0.39)	(0.65)	
營業毛利率(%)		5.5%	7.1%	6.9%			6.7%	4.6%	
營業淨利率(%)		-17.2%	-10.0%	-31.8%			-12.2%	-27.4%	
稅後淨利率(%)		27.3%	-37.3%	-35.0%			-11.2%	-20.2%	

*Note : EPS are based on the shares outstanding of 139,983K shares in Q3 2022.

Consolidated B/S for Q3 2024

In thousand NT\$

	2025Q3		2025Q2			2025Q3		2025Q2	
現金及約當現金	896,347	31%	792,960	28%	應付款項	172,374	6%	148,797	5%
金融資產-透過PL-流動	30,146	1%	30,252	1%	一年內到期長期借款	24,000	1%	24,000	1%
金融資產-按攤銷後成本	103,961	4%	140,513	5%	其他流動負債	106,516	4%	132,706	5%
應收款項	176,878	6%	174,169	6%	流動負債	302,890	10%	305,503	11%
存貨	110,378	4%	104,304	4%	長期銀行借款	933,000	32%	939,000	33%
其他流動資產	112,853	4%	114,672	4%	其他非流動負債	234,676	8%	237,157	8%
流動資產	1,430,563	49%	1,356,870	47%	非流動負債	1,167,676	40%	1,176,157	41%
金融資產-透過PL-非流	149,714	0%	153,384	0%	總負債	1,470,566	50%	1,481,660	52%
金融資產-透過OCI	665,377	23%	672,023	23%	股本	1,399,830	48%	1,399,830	49%
不動產、廠房與設備	540,740	19%	543,265	19%	資本公積	48,716	2%	48,716	2%
其他流動資產	129,751	4%	136,238	5%	未分配盈餘	(71,587)	-2%	(115,810)	-4%
非流動資產	1,485,582	51%	1,504,910	53%	其他權益	68,620	2%	47,384	2%
總資產	2,916,145	100%	2,861,780	100%	總股東權益	1,445,579	50%	1,380,120	48%

Main Products & Application



電子零組件

Precision Components Products



專業代工

Professional OEM/ODM



光電類

Optoelectronic Products

Precision Components Products



Switch



Encoder



Sensor

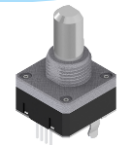


Potentiometer

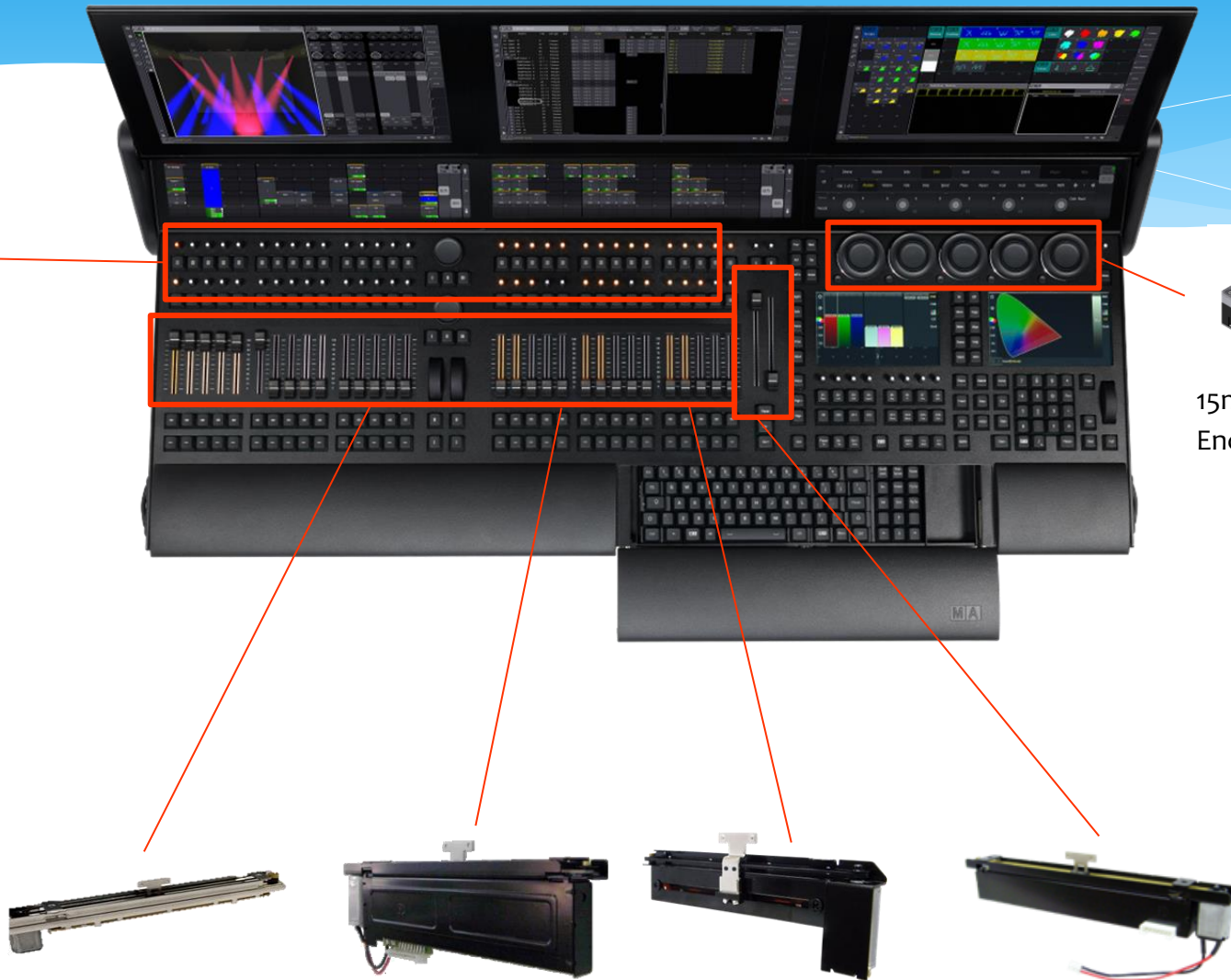
Precision Components Products



12mm Encoder
with RGB LED



15mm Contactless
Encoder



60mm/100mm Slide VR with motor

Optoelectronic Products

Backlight Module



12.3-15.1" Back light module



10.1" Back light module



19-21.5" Back light module

LCM Module



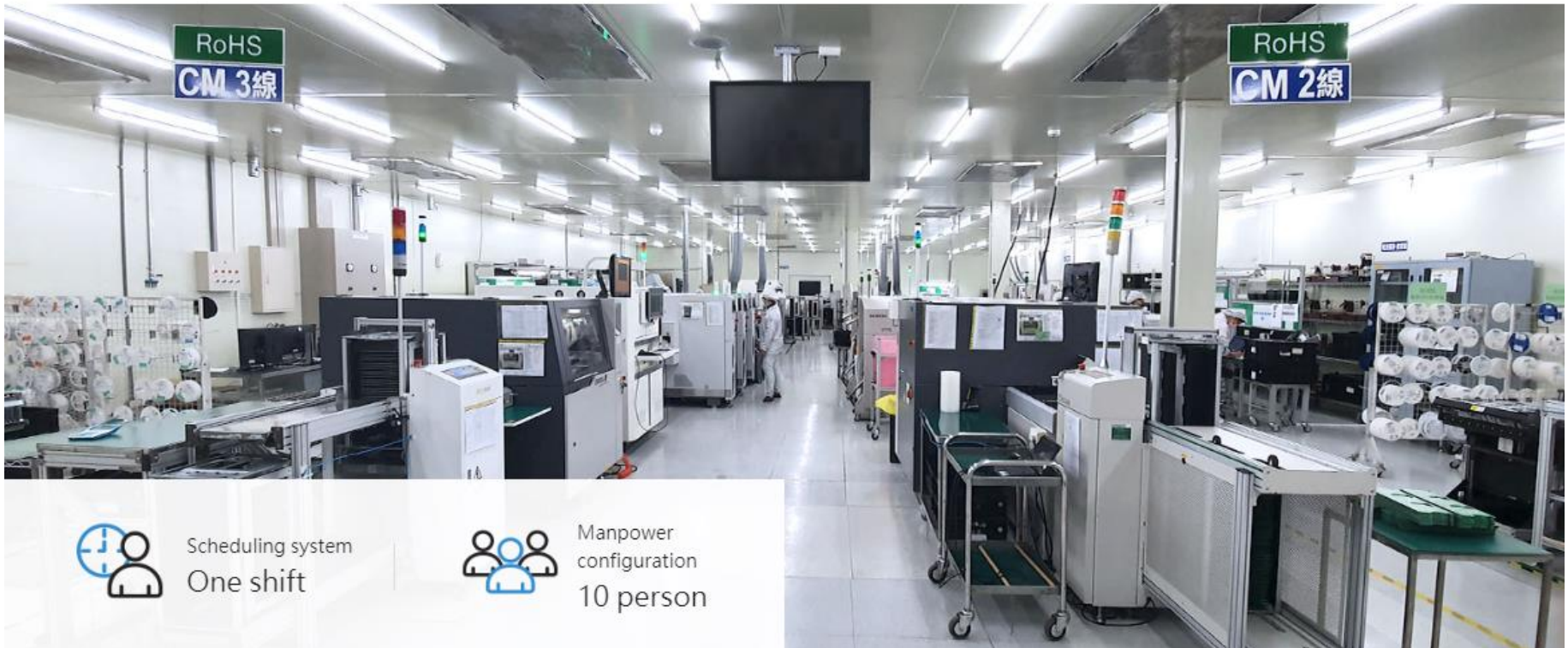
22- 33" LCM module

MON 4/10		22°C	MON 4/10		22°C
	Apple	Orange	Chinese gooseberry	Blackberry	
	\$ 0.8	\$ 0.5		\$ 0.5	
		Bnana		Cherry	
		\$ 1.2	\$ 2.8	\$ 1.2	

47.6-58.5" LCM module

Professional OEM/ODM

SMT Production Line



Professional OEM/ODM

DIP production line



Professional OEM/ODM

Assembly line



Scheduling system
One shift



Manpower
configuration
16 person

Thank You